

MMP-130A



Product code

[ex : Chrome cone /White trim / Narrow 11° / 3000K]

MMP-130A/CC/SWF/N/40B 30/Z1/ 2

Basic Product Series	Cone color	Trim color	Light distribution	Light source	Color temperature	Driver type	Auth-entification
----------------------	------------	------------	--------------------	--------------	-------------------	-------------	-------------------

©Dimming | 0-10V control | 10-100%

White	MMP-130A/WC/SWF/N.M/ 40B27.30.35.40/Z1/2
Matte black	MMP-130A/MC/SWF.SMF/N.M/ 40B27.30.35.40/Z1/2
Chrome	MMP-130A/CC/SWF.SMF/N.M/ 40B27.30.35.40/Z1/2

Products Specifications

· Input Voltage	AC120 ~ 277V
· Power consumption	52.0W(AC120V) / 50.9W(AC277V)
· Luminance flux	4,161 ~ 4,577 lm
· Color rendering	CRI (Ra)=93(typ)
· Fixture's weight	7.20 lbs
· Light distribution	Narrow (11°) Medium (19°)
· Input current	1.2A
· Aiming distance	0.3m (11 13/16 in)
· Ceiling thickness	23/64 ~ 63/64 in
· Tilting angle	35°
· Filter lighting [®]	2 Filters

Additional Accesaries

• Lens Filter

Full-Diffuser lens filter
MLA-130/DF01



[data download](#)

Semi-Diffuser lens filter
MLA-130/DS02



[data download](#)

Full-spread lens filter
MLA-130/SF01



[data download](#)

Semi-Spread lens filter
MLA-130/SS01



[data download](#)

Edge-control lens filter
MLA-130/EC02



[data download](#)

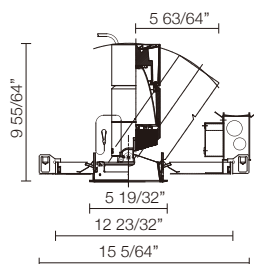
Sharpener lens filter
MLA-130/SH01



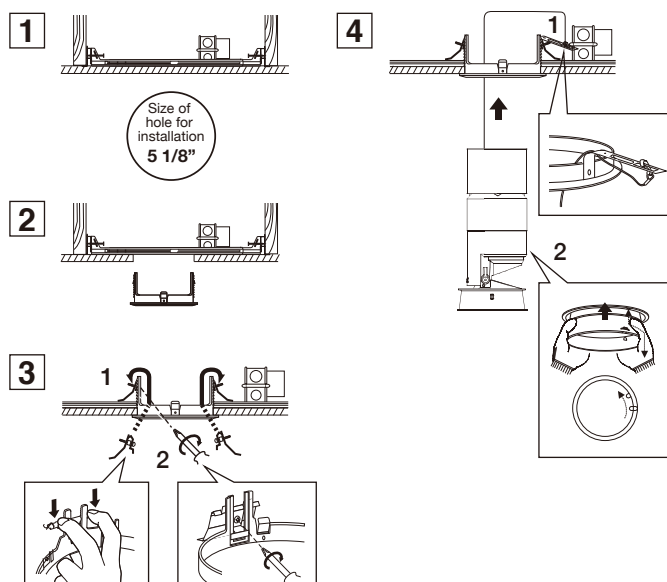
[data download](#)

Size

Size of hole for installation
5 1/8"



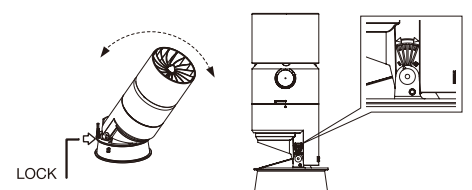
Installation



How to do tilt lock



Adjust the angle by looking at the scale and tighten the screw with the hexagon wrench to fix the angle.



Light distribution (for Chrome cone)

Narrow : 11°

N CC		11°		E(ft-cd)				
H(ft)	E(ft-cd)	D(ft)		2700K	3000K	3500K	4000K	
3.28	332	0.69		3.28ft	3158	3332	3406	3474
6.56	833	1.38		6.56ft	789	833	852	868
9.84	370	2.07		9.84ft	351	370	378	386
13.12	208	2.76		13.12ft	197	208	213	217

3000K / 4390Lm Solid line:vertically / Dotted line:tilt angel:25°

Medium : 19°

M CC		19°		E(ft-cd)				
H(ft)	E(ft-cd)	D(ft)		2700K	3000K	3500K	4000K	
3.28	2161	1.15		3.28ft	2048	2161	2209	2253
6.56	540	2.30		6.56ft	512	540	552	563
9.84	240	3.44		9.84ft	228	240	245	250
13.12	135	4.59		13.12ft	128	135	138	141

3000K / 4390Lm Solid line:vertically / Dotted line:tilt angel:25°

Light distribution (for Chrome cone) with Filter lighting[®]

Full-Diffuser lens filter | MLA-130/DF01

N CC		42°		E(ft-cd)			
H(ft)	E(ft-cd)	D(ft)		2700K	3000K	3500K	4000K
3.28	245	2.56		3.28ft	245	302	2.53
6.56	61	5.12		6.56ft	61	76	5.05
9.84	27	7.68		9.84ft	27	34	7.58
13.12	15	10.24		13.12ft	15	19	10.10

for Narrow

for Narrow 3000K / 4390Lm

for Medium 3000K / 4390Lm

Semi-Diffuser lens filter | MLA-130/DS02

N CC		32°		E(ft-cd)			
H(ft)	E(ft-cd)	D(ft)		2700K	3000K	3500K	4000K
3.28	490	1.90		3.28ft	490	533	1.97
6.56	122	3.81		6.56ft	122	133	3.94
9.84	54	5.71		9.84ft	54	59	5.91
13.12	31	7.61		13.12ft	31	33	7.87

for Narrow

for Narrow 3000K / 4390Lm

for Medium 3000K / 4390Lm

Full-spread lens filter | MLA-130/SF01

N CC		14°/43°		E(ft-cd)			
H(ft)	E(ft-cd)	D(ft)		2700K	3000K	3500K	4000K
3.28	695	0.85/0.79		3.28ft	695	662	1.12/2.79
6.56	174	1.71/1.58		6.56ft	174	166	2.23/5.58
9.84	77	2.56/2.37		9.84ft	77	74	3.35/8.37
13.12	43	3.41/3.16		13.12ft	43	41	4.46/11.15

for Narrow

for Narrow 3000K / 4390Lm

for Medium 3000K / 4390Lm

Semi-Spread lens filter | MLA-130/SS01

N CC		14°/34°		E(ft-cd)			
H(ft)	E(ft-cd)	D(ft)		2700K	3000K	3500K	4000K
3.28	1138	0.82/2.03		3.28ft	1138	1035	1.08/2.13
6.56	285	1.64/4.07		6.56ft	285	259	2.17/4.27
9.84	126	2.46/6.10		9.84ft	126	115	3.25/6.40
13.12	71	3.28/8.14		13.12ft	71	65	4.33/8.53

for Narrow

for Narrow 3000K / 4390Lm

for Medium 3000K / 4390Lm

Edge-control lens filter | MLA-130/EC02

N CC		33°		E(ft-cd)			
H(ft)	E(ft-cd)	D(ft)		2700K	3000K	3500K	4000K
3.28	338	1.97		3.28ft	338	365	2.07
6.56	84	3.94		6.56ft	84	91	4.13
9.84	38	5.91		9.84ft	38	41	6.20
13.12	21	7.87		13.12ft	21	23	8.27

for Narrow

for Narrow 3000K / 4390Lm

for Medium 3000K / 4390Lm

Sharpener lens filter | MLA-130/SH01

N CC		9°		E(ft-cd)			
H(ft)	E(ft-cd)	D(ft)		2700K	3000K	3500K	4000K
3.28	2669	0.52		3.28ft	2669	2669	0.52
6.56	667	1.05		6.56ft	667	667	1.05
9.84	297	1.57		9.84ft	297	297	1.57
13.12	167	2.10		13.12ft	167	167	2.10

for Narrow

for Narrow 3000K / 4390Lm

Narrow only

The attachment of the filters



- Remove the lock by sliding the body along the arrow direction, and detach the hood from the body.



- Rotate the option holder in the hood along the arrow direction and take the option holder out from the hood.



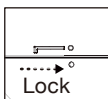
- Put the filter into the hood.
 - ※ up to 2 filters can be inserted.
 - ※ The sharpener lens are counted as 2 lens.



- Put back the option holder to the hood.



- Match the mark of the hood and the body and rotate the hood to lock.



Contact

Mosheo Corporation
 2B Airport Drive Ext. Hopedale, MA 01747
 Phone : +1-774-804-3283
 E-mail : ModuleXSales@Mosheocorp.com