

# MMP-100A



### Product code

[ ex : Chrome cone / White trim / Narrow 12° / 3000K ]

## MMP-100A/CC/SWF/N/30B 30/Z1/ 2

Basic Product Series	Cone color	Trim color	Light distribution	Light source	Color temperature	Driver type	Auth-entification
----------------------	------------	------------	--------------------	--------------	-------------------	-------------	-------------------

### ◉ Dimming | 0-10V | 5-100%

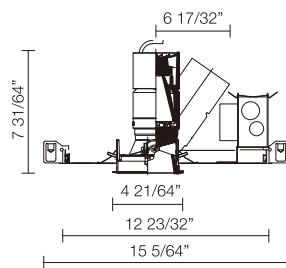
White	MMP-100A/WC/SWF/N.M/ 30B27.30.35.40/Z1/2
Matte black	MMP-100A/MC/SWF.SMF/N.M/ 30B27.30.35.40/Z1/2
Chrome	MMP-100A/CC/SWF.SMF/N.M/ 30B27.30.35.40/Z1/2

### Products Specifications

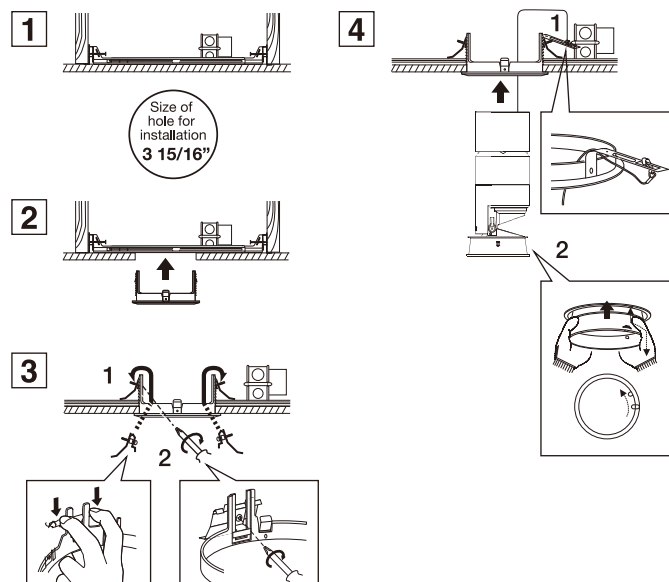
· Input Voltage	AC120 ~ 277V
· Power consumption	36.4W(AC120V) / 36.8W(AC277V)
· Luminance flux	2627 ~ 2894 lm
· Color rendering	CRI (Ra)=93(typ)
· Fixture's weight	5.40 lbs
· Light distribution	Medium (20°) Narrow (12°)
· Input current	0.83A
· Aiming distance	0.3m (11 13/16 in)
· Ceiling thickness	23/64 ~ 63/64 in
· Tilting angle	35°
· Filter lighting <sup>®</sup>	2 Filters

### Size

Size of hole for installation  
3 15/16"



### Installation



### Additional Accesaries

#### • Lens Filter

Full-Diffuser lens filter  
MLA-100/DF01



[data download](#)

Semi-Diffuser lens filter  
MLA-100/DS02



[data download](#)

Full-spread lens filter  
MLA-100/SF01



[data download](#)

Semi-Spread lens filter  
MLA-100/SS01



[data download](#)

Edge-control lens filter  
MLA-100/EC02



[data download](#)

Sharpeners lens filter  
MLA-100/SH01

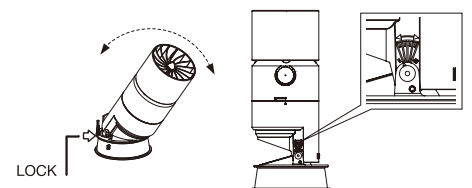


[data download](#)

### How to do tilt lock

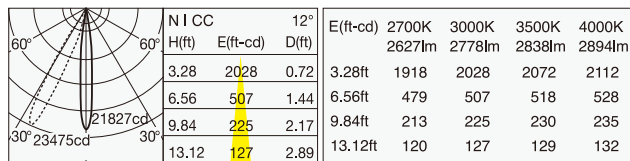


Adjust the angle by looking at the scale and tighten the screw with the hexagon wrench to fix the angle.



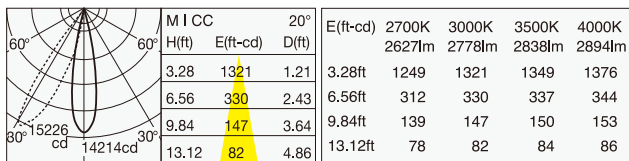
## Light distribution (for Chrome cone)

### Narrow : 12°



3000K / 2778Lm Solid line:vertically / Dotted line:tilt angel:25°

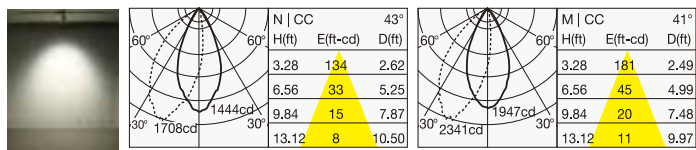
### Medium : 20°



3000K / 2778Lm Solid line:vertically / Dotted line:tilt angel:25°

## Light distribution (for Chrome cone) with Filter lighting<sup>®</sup>

### Full-Diffuser lens filter | MLA-100/DF01

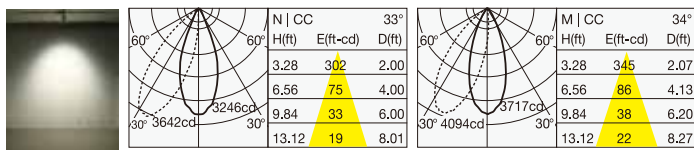


for Narrow

Solid line:vertically / Dotted line:tilt angel:25°  
for Narrow 3000K / 2778Lm

Solid line:vertically / Dotted line:tilt angel:25°  
for Medium 3000K / 2778Lm

### Semi-Diffuser lens filter | MLA-100/DS02

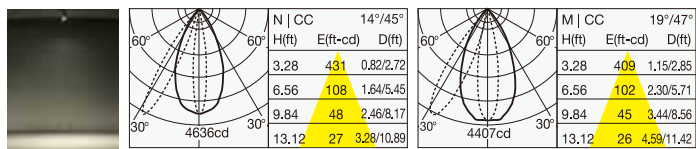


for Narrow

Solid line:vertically / Dotted line:tilt angel:25°  
for Narrow 3000K / 2778Lm

Solid line:vertically / Dotted line:tilt angel:25°  
for Medium 3000K / 2778Lm

### Full-spread lens filter | MLA-100/SF01

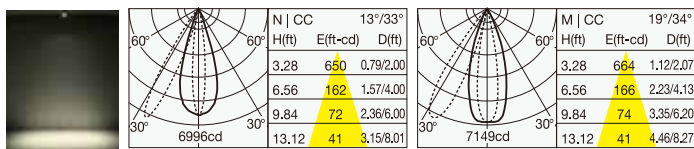


for Narrow

Solid line:vertically / Dotted line:tilt angel:25°  
for Narrow 3000K / 2778Lm

Solid line:vertically / Dotted line:tilt angel:25°  
for Medium 3000K / 2778Lm

### Semi-Spread lens filter | MLA-100/SS01

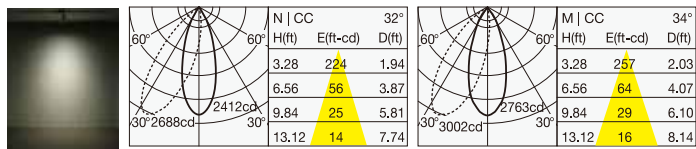


for Narrow

Solid line:vertically / Dotted line:tilt angel:25°  
for Narrow 3000K / 2778Lm

Solid line:vertically / Dotted line:tilt angel:25°  
for Medium 3000K / 2778Lm

### Edge-control lens filter | MLA-100/EC02

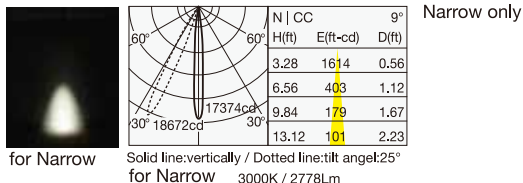


for Narrow

Solid line:vertically / Dotted line:tilt angel:25°  
for Narrow 3000K / 2778Lm

Solid line:vertically / Dotted line:tilt angel:25°  
for Medium 3000K / 2778Lm

### Sharpener lens filter | MLA-100/SH01



for Narrow

Solid line:vertically / Dotted line:tilt angel:25°  
for Narrow 3000K / 2778Lm

Narrow only

## The attachment of the filters



- Remove the lock by sliding the body along the arrow direction, and detach the hood from the body.



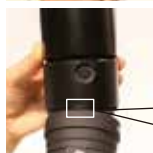
- Rotate the option holder in the hood along the arrow direction and take the option holder out from the hood.



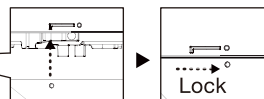
- Put the filter into the hood.
  - ※ up to 2 filters can be inserted.
  - ※ The sharpener lens are counted as 2 lens.



- Put back the option holder to the hood.



- Match the mark of the hood and the body and rotate the hood to lock.



## Contact

**Mosheo Corporation**  
2B Airport Drive Ext. Hopedale, MA 01747  
Phone : +1-774-804-3283  
E-mail : ModuleXSales@MosheoCorp.com

# ModuleX<sup>®</sup>