

ACCENT | Track light

[data download](#)

MMP-060S/1H



Product code

[ex : 10° hood / White / NORDIC type / Narrow 11° / 3000K]

MMP-060S/1H/W/1N/N/10A 30/N1/2

Basic Product Series	Hood	Color	Track type	Light distribution	Light source	Color temperature	Driver type	Auth-entification
----------------------	------	-------	------------	--------------------	--------------	-------------------	-------------	-------------------

○NORDIC type

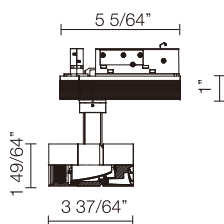
Dimming | Non-dimming

White	MMP-060S/1H/W/1N/N.M/10A24.27.30.35.40/N1/2
Matte black	MMP-060S/1H/M/1N/N.M/10A24.27.30.35.40/N1/2
Silver	MMP-060S/1H/S/1N/N.M/10A24.27.30.35.40/N1/2

Products Specifications

• Input Voltage	AC120V
• Power consumption	15.4W(AC120V)
• Luminance flux	941 ~ 1,088 lm
• Color rendering	CRI (Ra)=93(typ)
• Fixture's weight	0.82 lbs
• Light distribution	Narrow (11°) Medium (19°)
• Input current	0.129A (120V)
• Aiming distance	0.1m (3 15/16 in)
• Tilting angle	100°
• Filter lighting®	2 Filters

Size



Track system designation

NORDIC : type TEK-44,48,412
NORDIC ALUMINIUM INC

- This fixture is compatible with 2-circuit track only. The fixture attaches to both the left and right circuit rails of the track. Please ensure that only one power feed is supplied to the track.

Additional Accesaries

• Lens Filter

Full-Diffuser lens filter
MLA-060/DF01


[data download](#)

Semi-Diffuser lens filter
MLA-060/DS01


[data download](#)

Full-spread lens filter
MLA-060/SF01


[data download](#)

Semi-Spread lens filter
MLA-060/SS01


[data download](#)

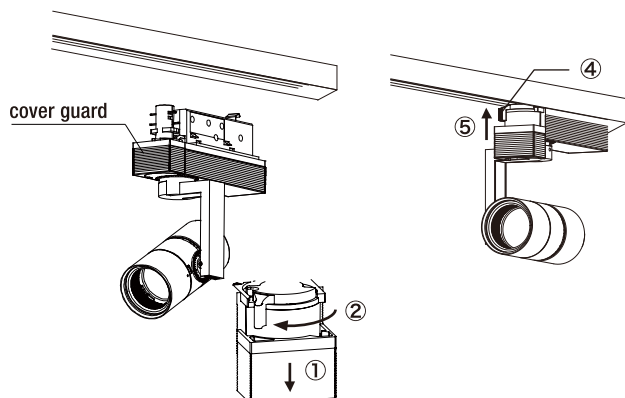
Edge-control lens filter
MLA-060/EC01


[data download](#)

Sharpeners lens filter
MLA-060/SH01


[data download](#)

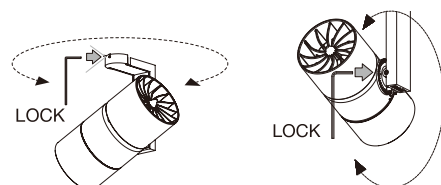
Installation



- ① Pull down the cover guard.
- ② Rotate the gear lever.
- ③ Push the driver box against the lighting rail.
- ④ Rotate the gear lever and lock it.
- ⑤ Push up the cover guard.

How to do tilt lock / pan lock

Each angle can be locked by allen wrench attached.



Light distribution

Narrow : 11°

N	11°				
H(ft)	E(ft-cd)	D(ft)	E(ft-cd)	2400K	2700K
3.28	829	0.69	941lm	941lm	992lm
6.56	207	1.38	6.56ft	748	789
9.84	92	2.07	9.84ft	187	197
13.12	52	2.76	13.12ft	83	88
				47	49
				52	53
				54	

3000K / 1042Lm

Medium : 19°

M	19°				
H(ft)	E(ft-cd)	D(ft)	E(ft-cd)	2400K	2700K
3.28	494	1.15	5317cd	941lm	992lm
6.56	123	2.30	6.56ft	446	470
9.84	55	3.44	9.84ft	111	118
13.12	31	4.59	13.12ft	50	52
				28	29
				31	32
				32	32

3000K / 1042Lm

Light distribution with Filter lighting®

Full-Diffuser lens filter | MLA-060/DF01

N	43°				
H(ft)	E(ft-cd)	D(ft)	E(ft-cd)	2400K	2700K
3.28	62	2.59	671cd	941lm	992lm
6.56	16	5.18	6.56ft	748	789
9.84	7	7.78	9.84ft	187	197
13.12	4	10.37	13.12ft	83	88
				47	49
				52	53
				54	

for Narrow

for Narrow 3000K / 1042Lm

for Medium 3000K / 1042Lm

Semi-Diffuser lens filter | MLA-060/DS01

N	34°				
H(ft)	E(ft-cd)	D(ft)	E(ft-cd)	2400K	2700K
3.28	128	2.03	1381cd	941lm	992lm
6.56	32	4.07	6.56ft	446	470
9.84	14	6.10	9.84ft	111	118
13.12	8	8.14	13.12ft	50	52
				28	29
				31	32
				32	32

for Narrow

for Narrow 3000K / 1042Lm

for Medium 3000K / 1042Lm

Full-spread lens filter | MLA-060/SF01

N	14°/49°				
H(ft)	E(ft-cd)	D(ft)	E(ft-cd)	2400K	2700K
3.28	178	0.82/3.02	1917cd	941lm	992lm
6.56	45	1.64/6.04	6.56ft	748	789
9.84	20	2.46/9.06	9.84ft	187	197
13.12	13	3.28/12.07	13.12ft	83	88
				47	49
				52	53
				54	

for Narrow

for Narrow 3000K / 1042Lm

for Medium 3000K / 1042Lm

Semi-Spread lens filter | MLA-060/SS01

N	14°/33°				
H(ft)	E(ft-cd)	D(ft)	E(ft-cd)	2400K	2700K
3.28	305	0.89/1.87	3278cd	941lm	992lm
6.56	76	1.77/3.74	6.56ft	446	470
9.84	34	2.66/5.61	9.84ft	111	118
13.12	19	3.54/7.48	13.12ft	50	52
				28	29
				31	32
				32	32

for Narrow

for Narrow 3000K / 1042Lm

for Medium 3000K / 1042Lm

Edge-control lens filter | MLA-060/EC01

N	33°				
H(ft)	E(ft-cd)	D(ft)	E(ft-cd)	2400K	2700K
3.28	89	2.00	962cd	941lm	992lm
6.56	22	4.00	6.56ft	748	789
9.84	10	6.00	9.84ft	187	197
13.12	6	8.01	13.12ft	83	88
				47	49
				52	53
				54	

for Narrow

for Narrow 3000K / 1042Lm

for Medium 3000K / 1042Lm

Sharpening lens | MLA-060/SH01

N	9°				
H(ft)	E(ft-cd)	D(ft)	E(ft-cd)	2400K	2700K
3.28	642	0.56	6906cd	941lm	992lm
6.56	160	1.12	6.56ft	446	470
9.84	71	1.67	9.84ft	111	118
13.12	40	2.23	13.12ft	50	52
				28	29
				31	32
				32	32

for Narrow

for Narrow 3000K / 1042Lm

for Medium 3000K / 1042Lm

The attachment of the filters



- Remove the lock by sliding the body along the arrow direction, and detach the hood from the body.



- Rotate the option holder in the hood along the arrow direction and take the option holder out from the hood.



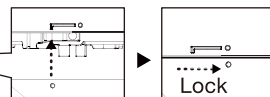
- Put the filter into the hood.
※ up to 2 filters can be inserted.
※ The sharpening lens are counted as 2 lens.



- Put back the option holder to the hood.



- Match the mark of the hood and the body and rotate the hood to lock.



Contact

Mosheo Corporation

2B Airport Drive Ext. Hopedale, MA 01747

Phone : +1-774-804-3283

E-mail : ModuleXSales@Mosheocorp.com

ModuleX